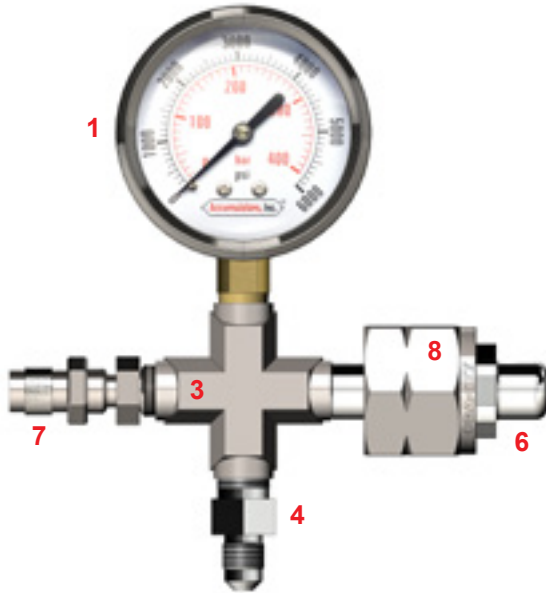


6000 PSI C&G ASSEMBLY

BLADDER ACCUMULATORS - CHARGING & GAUGING

CHARGING AND GAUGING KITS FOR 4000, 5000 & 6000 PSI ACCUMULATORS



C&G HOSE

*Connects to accumulator high pressure gas valve

FULL ASSEMBLY COMPONENT PARTS LIST

PART	DESCRIPTION	PART NUMBER
	Complete Kit (Items 1-8)	AI-CG6-6KT-SS
1	Gauge, 6000 PSI	AI-CG6-501-SS
2	Air Chuck	AI-CG6-502-SS
3	Cross	AI-CG6-503-SS
4	JIC Adapter	AI-CG6-506-SS
5	Hose (8 ft.)	AI-CG6-507-SS
6	Cylinder Valve Tube	AI-CG6-508-SS
7	Bleed Valve	AI-CG6-509-SS
8	Cylinder Valve Nut	AI-CG6-511-SS
	Hose Assembly (Items 2,4,5)	AI-CG6-517-SS
	Gauging & Head Assembly (Items 1,3,4,6,7,8)	AI-CG6-613-SS

WARNING!

AI-CG6-6KT-SS is rated to 6000 PSI maximum working pressure. Do not use on accumulators with a pressure higher than 6000 PSI. Connects to a maximum 6000 PSI nitrogen tank with a CGA 677 connection. It is highly recommended that a N₂ gas regulator be used while charging any accumulator. Use dry nitrogen gas (N₂) only.

ALSO AVAILABLE:

- Complete accumulator repair kits
- N₂ gas regulators
- Special order C&G kits with different connections and different hose lengths